

---

MODEL NUMBER R3-6101

ITEM NO.	PART DESCRIPTION	PART NUMBER	QUAN.
1	TRIPOD HEAD	2573-0000	1
2	PIN ASSEMBLY	1999-0000	3
3	EYE BOLT 1-8NC X 6 LG.	73-0070	1
4	HEX. NUT 1-8NC	54-0010	2
5	FLAT WASHER	56-0210	1
6	SWIVEL WASHER	2187-0000	1
7	TRIPOD LEG ASSEMBLY	1640-0100T6	3
8	TRIPOD UPPER LEG	1641-0100T6	3
9	ROLL PIN 5/32 X 3/4 LG.	61-0300	3
10	LOAD PIN	3016-0000	3
11	EXTENSION SPRING	1017-0000	6
12	TRIPOD LOWER LEG	1642-0100	3
13	TRIPOD FOOT	3047-0000	3
14	PIN TRIPOD FOOT	2853-0000	3
15	KEY RING 2 1/4 DIA.	82-0030	3
16	SAFETY STOP ASSEMBLY	3112-0001	3
17	LASHING CABLE ASSEMBLY 37'3" LG.	3348-0038	1
18	WIRE ROPE CLIP	71-0100	2

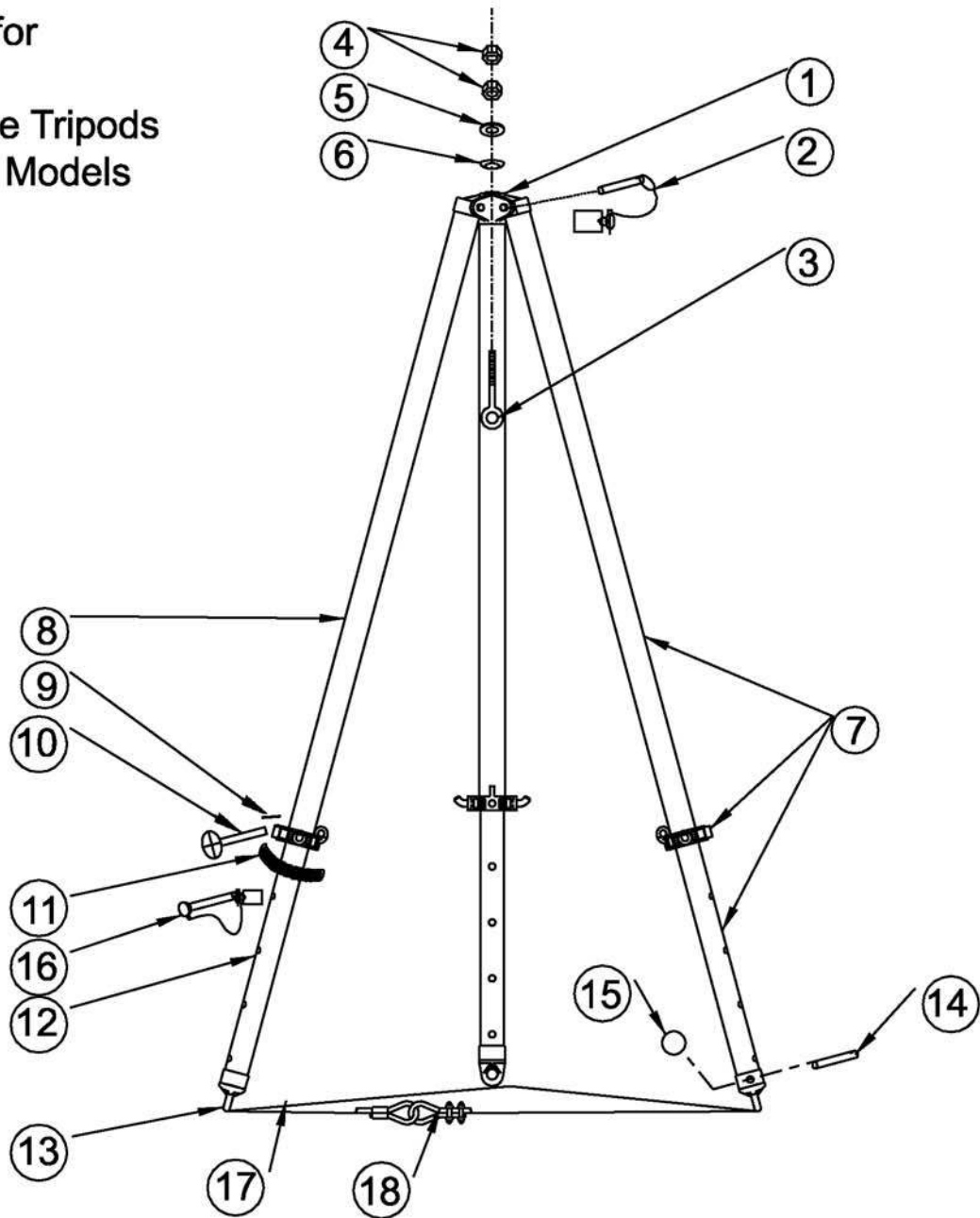
\*\*\*\*\*OPTIONAL ACCESSORIES\*\*\*\*\*

19	TRIPOD RUBBER BASE PAD	3045-0001	3
20	PIN TRIPOD RUBBER BASE PAD	1459-0000	3
21	KLIK PIN - 1/4 DIA.	81-0010	3
22	COTTER PIN 1/4 X 1-1/4 LG.	60-0070	3
23	TRIPOD SPIKE BASE	2727-0000	3
24	MUD BASE PLATE	1097-0000	3

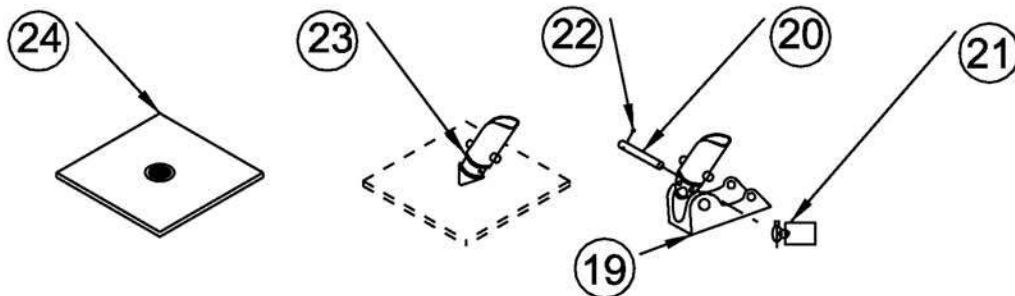
When Ordering Tripod Parts, Specify Model Number, Capacity,  
Part Number and Description

Parts Location  
Drawing for

Adjustable Tripods  
3- Series Models

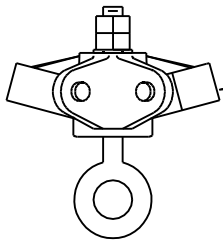


Optional Accessories

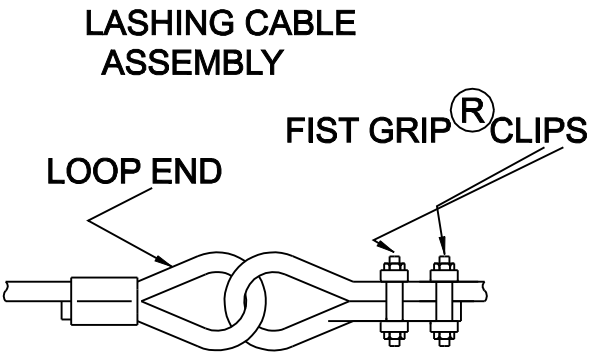
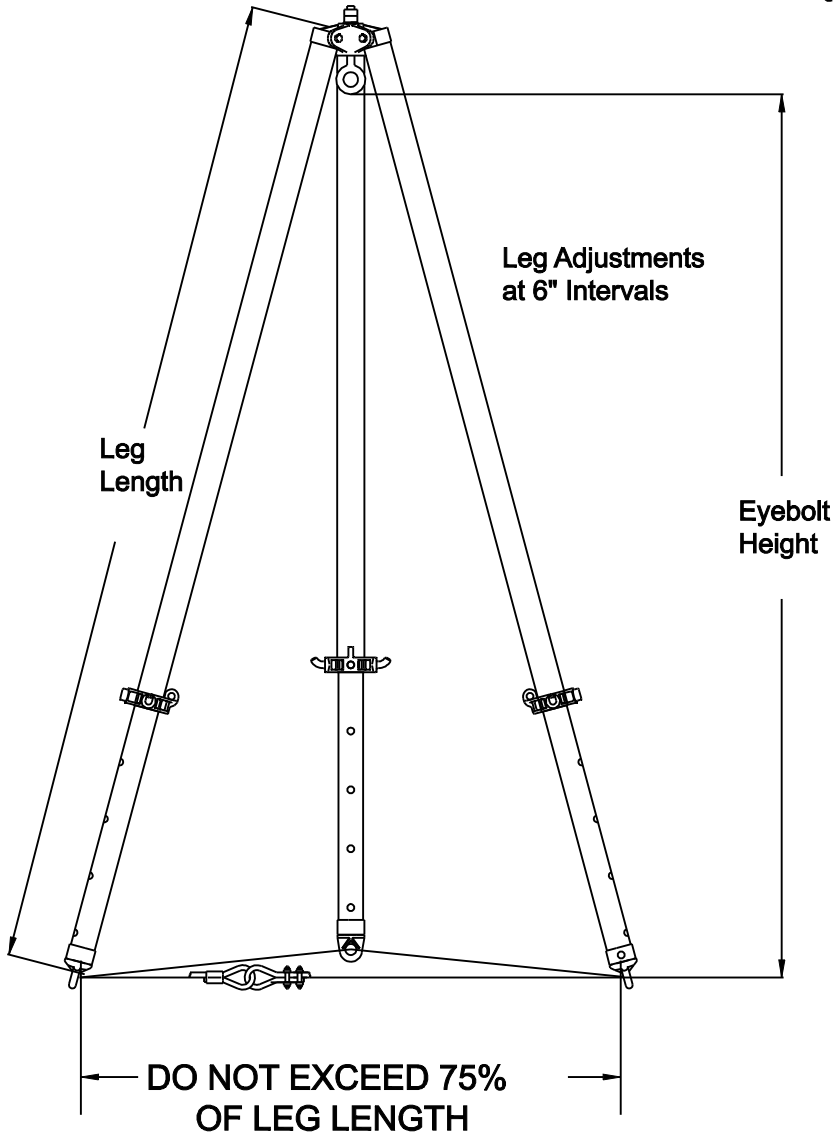


**NOTE:** The Lashing Kit provided with the Tripod must be used.

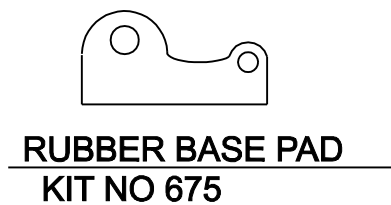
The Lashing Cable is installed through the holes in the Tripod foot or rubber base pad. The free end is then put through the loop end of the cable and terminated as shown using the two Fist Grip Clips to complete the assembly. Torque bolts to 30 ft/lbs.



Detail of head.  
Nut is shown on top,  
Hemispherical washer is  
below the nut, curved side down.



**OPTIONAL ACCESSORIES**



UNLESS OTHERWISE SPECIFIED DIMENSIONS ARE IN INCHES TOLERANCES ON				<i>Wallace Products Corp.</i> FRAZER, PENNSYLVANIA			
FRACTION ±1/64"		DECIMAL ±0.000"		TITLE <b>TRIPOD INSTRUCTIONS</b>			
DRAWN BY	DATE	SCALE	WT.	DWG C SIZE	DRAWING NO.	REV.	
CHECKER		NTS					
APPROVAL							
NEXT ASSY	SYMBOL	DESCRIPTION	DATE	INT.	REVISIONS		