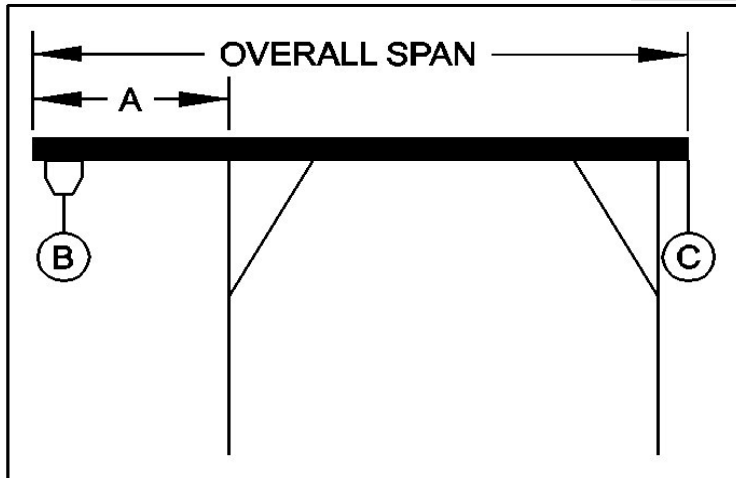




## PORTABLE CRANE CANTILEVER CHART

GANTRY MODEL NUMBER:	A3T10-A10
I-BEAM:	Alu. 10" X 8.8#/' X 10'
I-BEAM LENGTH (OVERALL SPAN):	120 Inches
MAXIMUM CANTILEVER DISTANCE (A):	30 Inches
GANTRY RATED CAPACITY:	3000 Lbs.
MAXIMUM CANTILEVERED LOAD (B):	1800 Lbs.
GANTRY WEIGHT:	359 Lbs.
I-BEAM WEIGHT:	89 Lbs.



PROPER CANTILEVER PROCEDURES  
Required counterweight should not be supported by gantry caster frame.

Load and trolley should be able to freely traverse the I-beam through the main legs and brace legs of the gantry.

### REQUIRED COUNTERWEIGHT AT [C]

A	B	B	B	B	B	B
IN	300	600	900	1200	1500	1800
FEET	LBS.	LBS.	LBS.	LBS.	LBS.	LBS.
1	0	0	25	92	158	225
2	0	131	281	431	581	731
2.5	35	235	435	635	835	1035