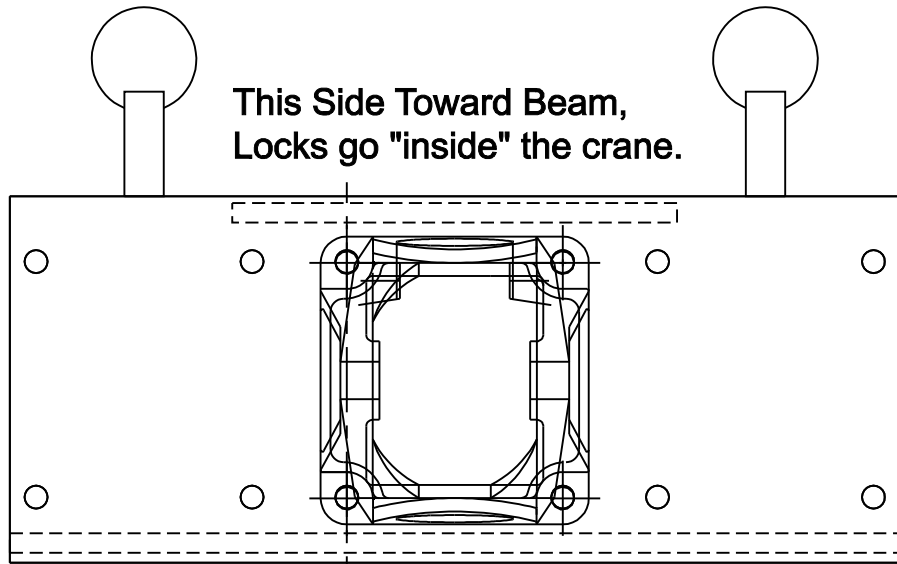


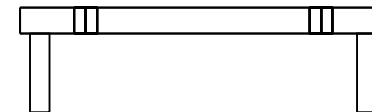
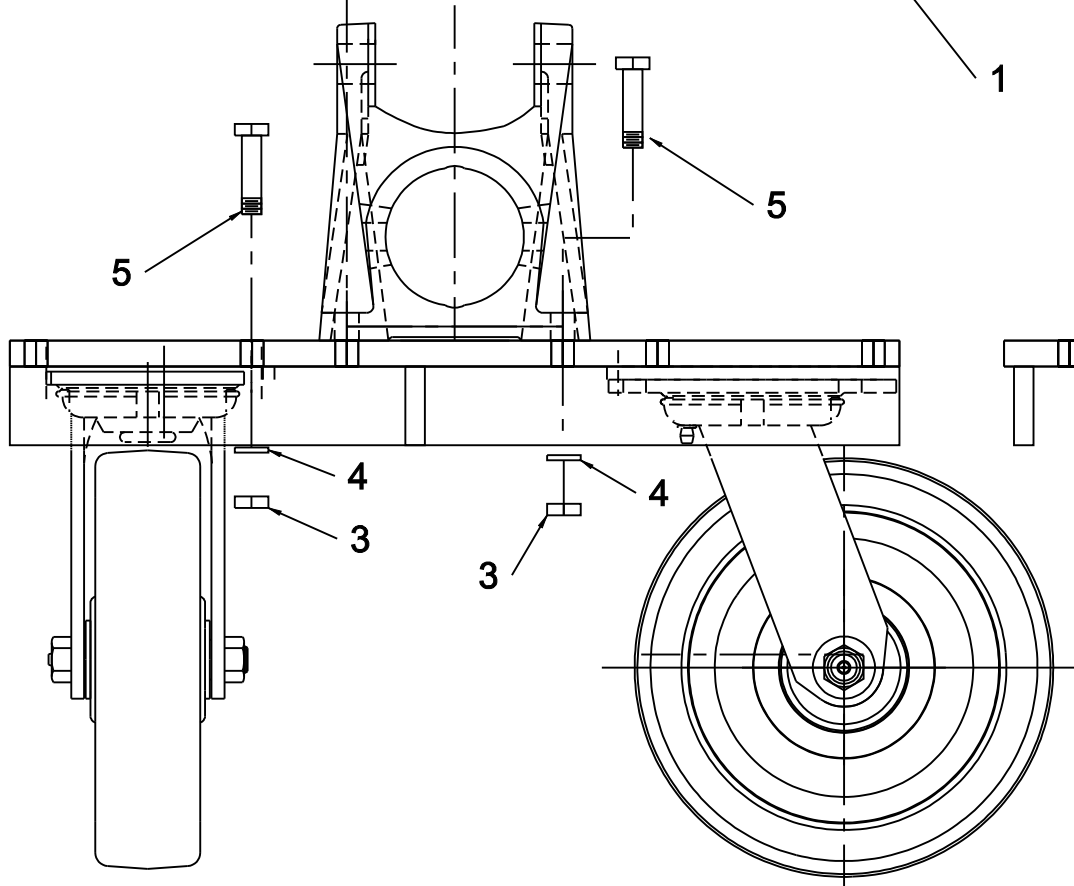
This Side Toward Beam,
Locks go "inside" the crane.



Parts List			6511
Item #	Part #	DESCRIPTION	Number
1	6513	1.5 Ton Base Plate Assy	4
2	47-0010	8" Caster	8 *
3	54-0060	3/8 Nut	48 **
4	58-0060	3/8 LOCKWASHER	48 **
5	51-0190	1 1/2" BOLT	48 **

* 8 PN 47-0010 packed inside
2 cartons 114-000 (4/CTN)

** 16 each P/N 54-0060, 58-0060, and
51-0190 packed in Bag No. 500 inside
caster frame carton



Assembly Instructions

- 1) Attach casters to caster plate with the hardware as indicated.
- 2) Position caster plate/caster assemblies near caster frame.
- 3) With an appropriate lifting device, raise crane so that caster assemblies can be slid under the caster frame.
- 4) Attach caster frame assembly with hardware as indicated.